



**Asset Management Engineers**

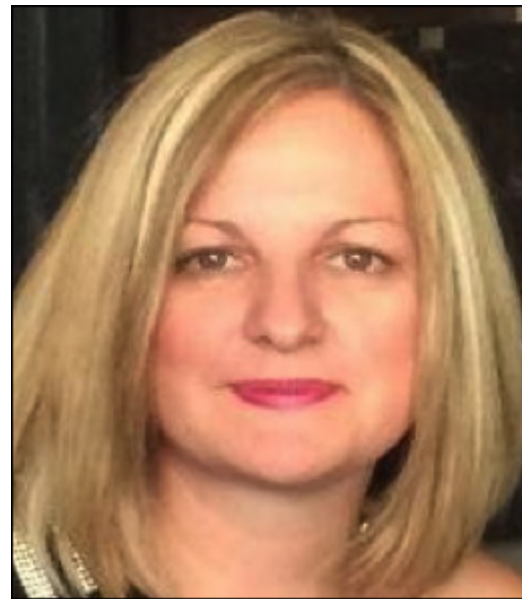
***The Smarter  
Choice***

**AME are proud to welcome Grace Jenkins as an Asset Management Consultant to our team.**

Dear First Name,

An industry leader in her own right, Grace joins AME as a highly experienced Operations Coordinator in Labour Management, Asset Inspection Services and Human Resources.

Grace has extensive experience as a Senior Consultant and Asset Services Manager within the mining, engineering and maintenance sectors, specialising in Plant Inspection Services and Non-destructive Testing (NDT). Grace brings with her a wealth of industry knowledge and a solid background in strategic management and planning.



AME are delighted to welcome Grace to our team to further our industry knowledge and expand on our implementation of Asset Services across the industry. Grace's area of expertise as an Asset Management Consultant at AME covers but is not limited to:

- Plant Inspection Services management, reporting and evaluation
- Non-Destructive Testing services
- Contracting Services •, Labour hire of high end white collar Asset Management staff

Those who have worked with Grace in the past can attest to her extensive hands on experience, high level of efficiency, strong work ethic and personable management skills.

With the addition of Grace Jenkins to our team AME look forward to continue delivering on our brand promise and furthering our commitment to providing a comprehensive full service offering and experienced, competent and passionate personnel.

If you would like to contact Grace Jenkins to enquire about Asset Management Services, Plant Inspections, NDT or Contracting Services:

Mobile: 0427 491 548

Email: [grace@asseteng.com.au](mailto:grace@asseteng.com.au)

Welcome to the team Grace, we look forward to seeing your passion and expertise come to life at AME!

Regards,

**Trevor Hughes - Director**

[trevor@asseteng.com.au](mailto:trevor@asseteng.com.au)

[www.asseteng.com.au](http://www.asseteng.com.au)



Asset Management Engineers  
PO Box 421, Belmont, Perth,  
Western Australia, 6104

Phone +61 8 9466 7466

Fax +61 8 9466 7499

Mobile 0419 941 106



### **Major changes ahead for Mine Safety Regulations**

The Department of Mines and Petroleum has begun the process of modernizing the current Mine Safety Regulationsâ•€ [Read more](#)

### **How often should Pressure Relief Valves get certified?**

PRVâ•€s often need to be recertified or replaced earlier than recommended due to the nature of their environmentâ•€ [Read more](#)

### **Classified Plant Training at AME**

[View the training schedule and available dates here](#)

*The Smarter  
Choice*